

Underground Mobile Home Entrance Requirement

PVC SIZE (SCHEDULE 80)

200 AMP - 2 1/2"

100 AMP - 2 1/2"

Approved electrical PVC conduit

Wire Size

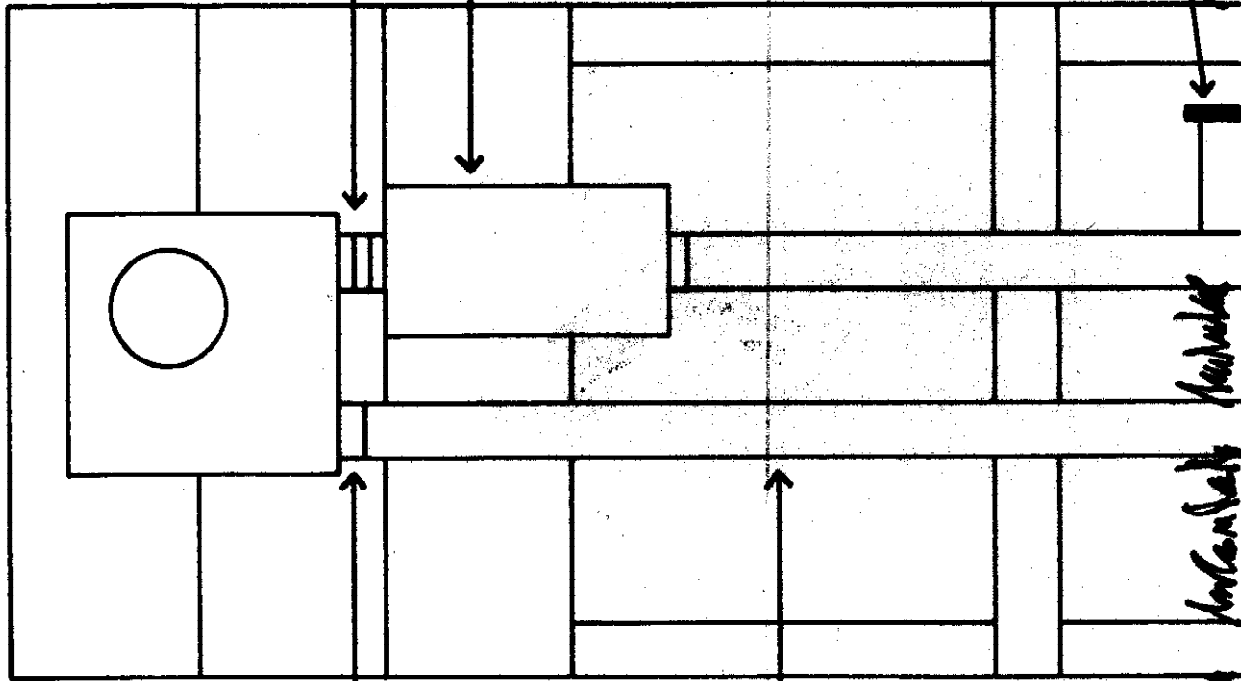
200 AMP - 2/0 Copper or 4/0 Aluminum

100 AMP - #4 Copper or #2 Aluminum

* 4 Wire Service Required From Disconnect Box To All Mobile Homes and Modulars

**2 1/2" Male Adapter
Plus Lock Ring and Bushing**

**2 1/2" PVC Schedule 80 minimum
Gray In Color
(For REMC Entrance Wire)**



Treated Wood

Male Adapters

100 AMP or 200 AMP
Disconnect (Weatherproof)

6" to Center of Meter

Treated 4x4
3' to 4' Deep
5 1/2' to 6' Out Of Ground

2-5/8" x 8' Copper Ground Rods
(Allow a minimum separation of 6'
between ground rods)
#6 Bare Copper Ground Wire
Run To Disconnect Box

M. Madala

K. Carlson

K. Carlson

M. Madala

Noble REMC
A Touchstone Energy Cooperative
The power of human connections

260-636-2113 • 800-933-7362

MAY 2005