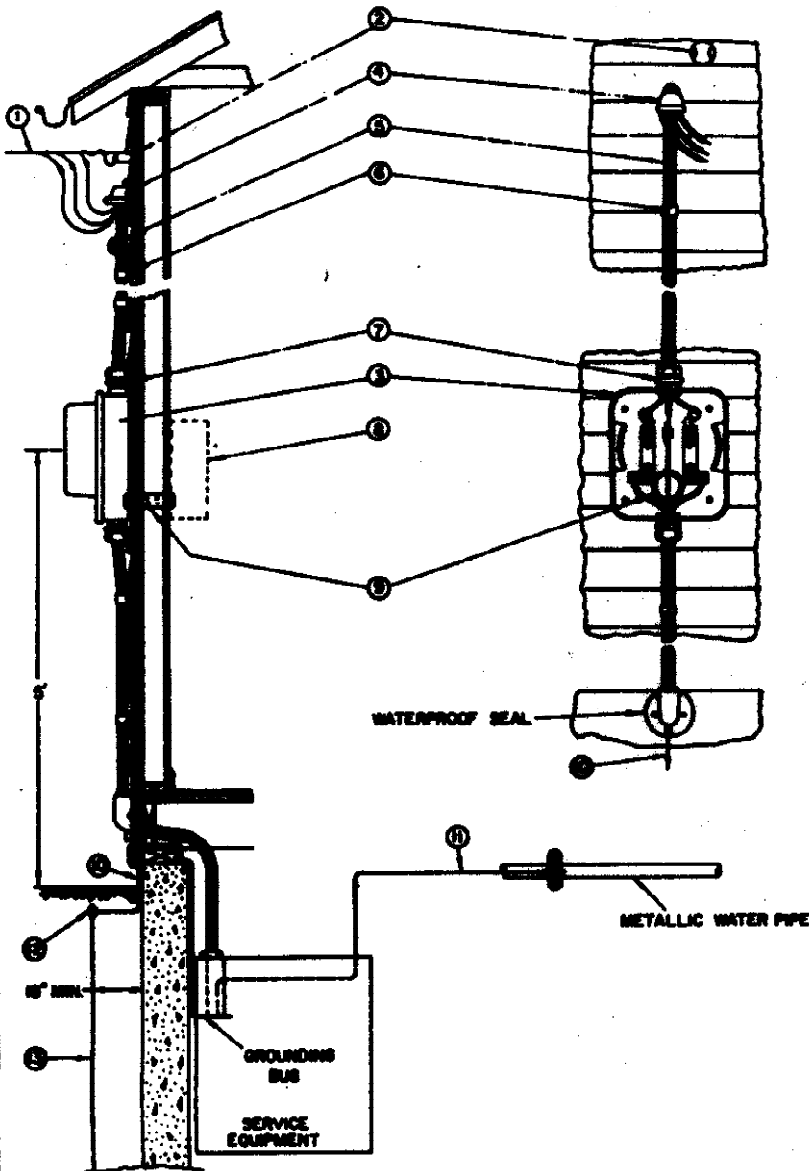


RESIDENTIAL OVERHEAD SERVICE ENTRANCE INSTALLATION 100-200 AMP, 120/240 VOLT, 3 WIRE, SINGLE PHASE



PROVIDED & INSTALLED BY NOBLE REMC

① 3 CONDUCTOR SERVICE TO HOUSE. SEE NOTE A.

PROVIDED & INSTALLED BY CUSTOMER

② INSULATED WIREHOLDER.

③ METER SOCKET TO BE MOUNTED PLUMB IN ACCESSIBLE LOCATION. SEE NOTE A.

④ WEATHERHEAD. LEAVE 30" MIN. OF 3 CONDUCTORS OUT OF WEATHERHEAD TO FORM DRIP LOOP FOR CONNECTION TO REMC SERVICE.

⑤ SERVICE ENTRANCE CABLE OR CONDUIT. CONDUIT MUST BE GALVANIZED RIGID STEEL OR APPROVED PVC. SEE N.E.C. TABLE BELOW FOR MINIMUM CONDUCTOR SIZE ALSO NOTES A & C. (SCHEDULE 80 PVC USED 10' AND BELOW.)

SERVICE RATINGS	100A	150A	200A
TYPE	RISER	CONDUCTOR	SIZE
CU	#4	1	2/0
AL (See Note B)	#2	2/0	4/0

⑥ CABLE STRAP-SECURE 12" FROM METER & EVERY 24".

⑦ WATERTIGHT CABLE CONNECTOR.

⑧ ALTERNATE LOCATION OF SERVICE EQUIPMENT MAY BE MOUNTED FLUSH. SEE NOTE C.

⑨ IF METALLIC CONDUIT IS USED, GROUNDING BUSHINGS MUST BE PROVIDED ON BOTH ENDS.

⑩ USE #4 BARE STRANDED COPPER FROM SERVICE EQUIPMENT GROUND BUS TO GROUND ROD. DO NOT ROUTE GROUND WIRE THROUGH METER BASE.

⑪ GROUND FROM SERVICE EQUIPMENT GROUND BUS TO METALLIC WATER PIPE.

⑫ N.E.C. APPROVED GROUND CLAMP SUITABLE FOR BURIAL.

⑬ 2-N.E.C. APPROVED GROUND RODS (5/8"x8"). (ALLOW A MINIMUM SEPARATION OF 6' BETWEEN GROUND RODS.)

NOTES:

- A. LOCATION OF THE METER & THE HEIGHT OF SERVICE ENTRANCE MUST BE DETERMINED TO PROVIDE PROPER CLEARANCES FOR SERVICE PER THE CURRENT NATIONAL ELECTRIC SAFETY CODE. MOUNTING HEIGHT TO BE 5' TO CENTER OF METER.
- B. ALUMINUM ELECTRICAL JOINT COMPOUND SHALL BE APPLIED TO ALL ALUMINUM CONDUCTORS BEFORE CONNECTIONS ARE MADE.
- C. THE CUSTOMER MUST FOLLOW THE CURRENT NATIONAL ELECTRIC CODE & ALL LOCAL CODES.

Noble REMC
A Touchstone Energy Cooperative 
The power of human connections